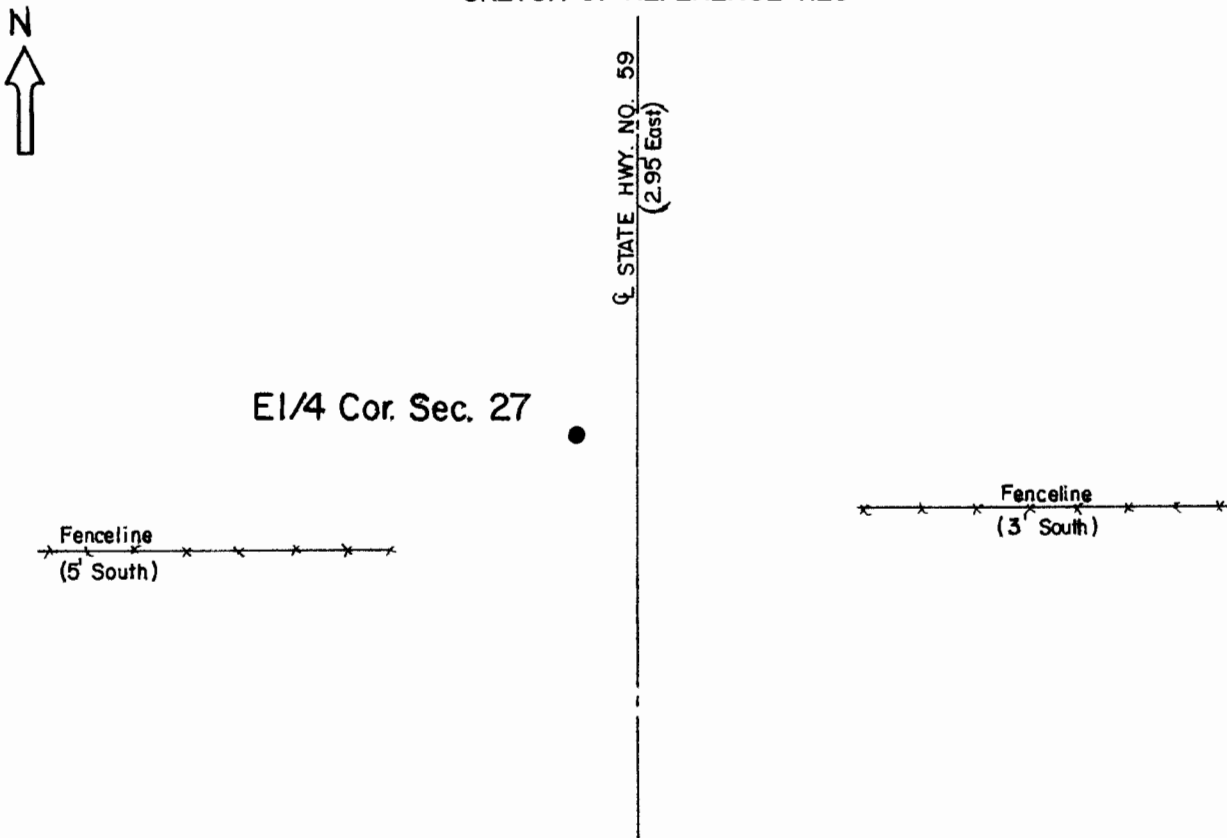


CERTIFICATE OF LOCATION OF GOVERNMENT CORNER

East Quarter Corner of Section **27** , Township **108** , Range **41** 5th P.M.
STATE OF MINNESOTA, County of Murray.

Statement: Oct. 17, 1989 - Found a Brass Plug placed in concrete road surface by the Minnesota Department of Highways in 1931. Left the monument as found.

SKETCH OF REFERENCE TIES



Statement of evidence relative to this corner location is on the back of page.

I hereby certify that this document and the data contained herein was prepared by me or under my direct supervision and that I am a duly Registered Land Surveyor under the laws of the State of Minnesota.

Duane A. Bonnema Nov 9, 1989
Duane A. Bonnema Date

Minnesota Registration No. 14895

OFFICE OF THE COUNTY RECORDER
COUNTY OF MURRAY **NOV 15 1989**

I hereby certify that this document was filed in the County Recorder's office at ___M. on the ___ day of ___ A.D., 19__

County Recorder James V. Johnson

By _____, Deputy

DOCUMENT NO. _____

East Quarter Cor. Sec. 27 T108N-R41W

Statement:

- August 1861* *Original Government Land Office Surveyor L. G. M. Fletcher records in his field notes, "built mound with trench pits, charred stake, per instructions."*
- April 25, 1905* *J. W. Woolstencroft, County Surveyor, records in the County Surveyor's Record Book, page 188, "Government stake."*
- 1932* *The Minnesota Highway Department records in their field notes "1/4 Cor., Brass Plug Inp., Field Stone Inp." They note the location as being 3.0 feet left of Sta 538+42.5.*
- Oct. 17, 1989* *Duane A. Bonnema, L.S. Reg. No. 14895, removed 4 inches of asphalt pavement and found the brass rod placed in the concrete pavement surface by the Minnesota Department of Highways in 1932.*